

# Education Stabilization Fund-SEA Proposed Spending and Implementation Plan

---

American Samoa Department of Education

## ESF-SEA II Grant-Recommended Distribution

ESF-SEA Grant Award	\$102,042,272.00
10% Administrative	\$10,204,227.20
Award Less Administrative <i>(Distributed to schools)</i>	\$91,838,044.80
Per Pupil (12,969)	\$7,081.35
<b>Private Schools (2,818)</b>	<b>\$19,955,244.30</b>
<b>Public Schools (10,151)</b>	<b>\$71,882,783.85</b>

# Proposed Distribution for Public High Schools

School	Population	Budget
Fagaitua High	438	3,101,631.30
Leone High	634	4,489,5675.90
Manu'a High	39	276,172.65
Nu'uuli Voc-Tech High	314	2,223,543.90
Samoana High	869	6,153,693.15
Tafuna High	1,189	8,419,725.15
<b><u>PUBLIC HIGH SCHOOL TOTAL</u></b>	<b><u>3,483</u></b>	<b><u>\$24,664,342.10</u></b>

# Proposed Distribution for Public Elementary Schools

School	Enrollment	Budget
AP Lutali (Aunu'u)	68	\$481,531.80
Afonotele	51	\$361,148.85
Alataua Lua	180	\$1,274,643.00
Alofau	116	\$821,436.60
Aua	320	\$2,266,032.00
Fagali'i	83	\$587,752.05
Faleasao	65	\$460,287.75
Fitiuta	43	\$304,498.05
Lauli'i	143	\$1,012,633.05
Le'atele (Fagasa)	77	\$545,263.95
<b><i>SUB TOTAL</i></b>	<b><i>1,146</i></b>	<b><i>\$8,115,227.10</i></b>

# Proposed Distribution for Public Elementary Schools

School	Enrollment	Budget
Leone Midkiff	716	5,070,246.60
Lupelele	568	4,022,206.80
Manulele	894	6,330,726.90
Masefau	89	630,240.15
Matafao	497	3,519,430.95
Matatula	129	913,494.15
Mt. Alava (Vatia)	64	453,206.40
<b><i>SUBTOTAL</i></b>	<b><i>2,957</i></b>	<b><i>20,939,552.00</i></b>

# Proposed Distribution for Public Elementary Schools

School	Enrollment	Budget
Olomoana (Aoa)	77	\$545,263.95
Olosega/Ofu	47	\$332,823.45
Pava'ia'i	1,033	\$7,315,034.55
P.T. Coleman (Pago Pago)	506	\$3,583,163.10
Siliaga (Aloau)	145	\$1,026,795.75
Tafuna	757	\$5,360,581.95
<b><i>SUB TOTAL</i></b>	<b>2,565</b>	<b>\$18,163,662.80</b>
<b><u>PUBLIC ELEMENTARY TOTAL</u></b>	<b><u>6,668</u></b>	<b><u>\$47,218,441.80</u></b>

# Public School Recommended Guidelines (**\$71,882,783.85**)

**50%**

**INFRASTRUCTURE/  
TRANSPORTATION  
IMPROVEMENT  
\$35,941,391.93**

Construction and transportation improvements to ensure health and safety activities in relation to compliance with CDC guidelines



- Technology Upgrade
- Maintenance Supplies, Equipment, and materials
- Additional Transportation
- Renovation/extension
- AC/Ventilation

**30%**

**STUDENT LEARNING  
AND PROFESSIONAL  
DEVELOPMENT  
ENHANCEMENTS  
\$21,564,835.16**

Improvements required to improve in class learning as well as distance learning if American Samoa has a case.

- Technology/Network Upgrade
- Distance Learning Supplies, Equipment and Materials
- Classroom Supplies and Equipment
- STEAM and ARTS integration
- Professional Development/Training

**10%**

**PROTECTION AND  
RESILIENCY  
\$7,188,278.38**

Mitigating measures to combat and prevent the spread of COVID-19 at the school facilities

- Cleaning and Sanitation Supplies and Equipment
- Sanitation Services
- Contract Cleaning/Landscaping Services
- Personnel (e.g. Truancy, Security, Resource Officers, )

**10%**

**RESERVE  
\$7,188,278.38**

Management Costs and Contingencies

- Management Costs
- Contingencies
- Hiring additional personnel to monitor and process.

# Public Schools Total Award and Guidelines

Cost per Student: \$7,081.35

Total Student Enrollment: 10,151

**Total Public School Allocations: \$71,882,783.85**

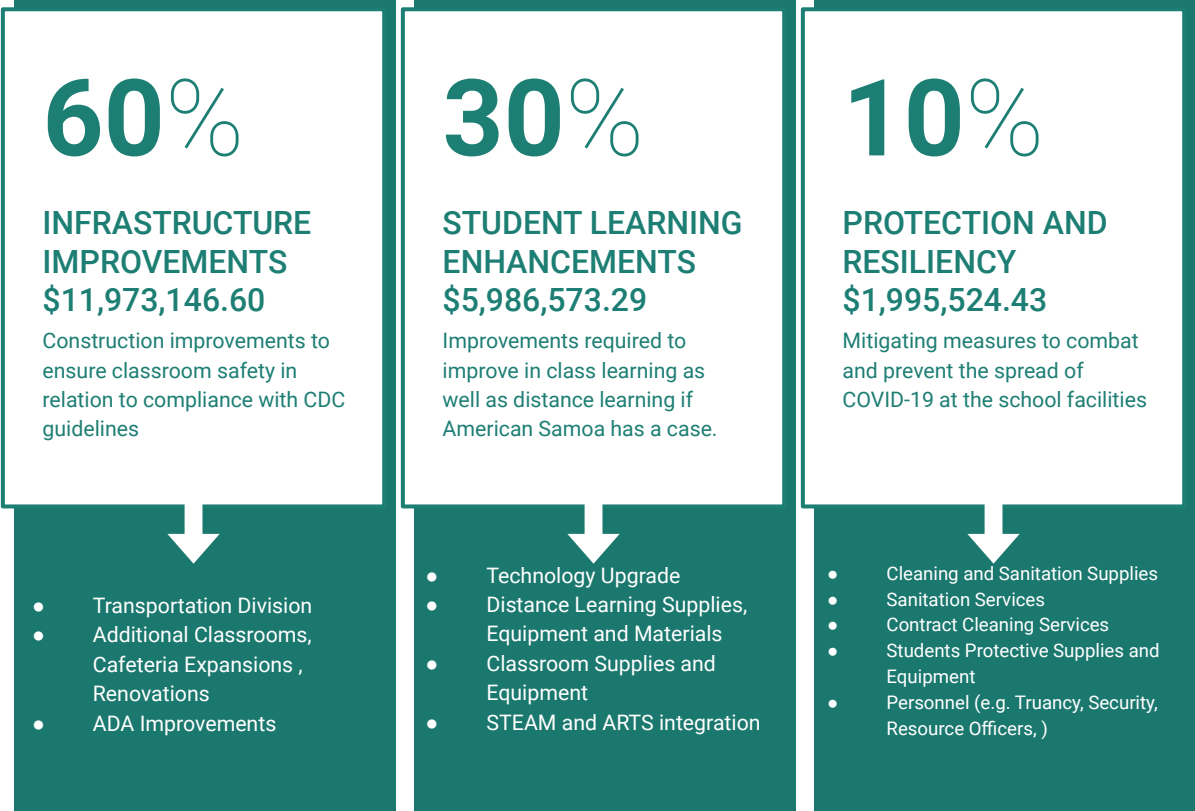
Infrastructure Improvements (50%)	\$ 35,941,391.93
Student Learning & Professional Enhancement (30%)	\$ 21,564,835.16
Resiliency (10%)	\$ 7,188,278.38
Reserve (10%)	\$. 7,188,278.38



# Proposed Distribution for Private Schools

Private School	Total Population	Budget
Iakina SDA	246	\$1,742,012.20
Kanana Fou Elementary	353	\$2,499,715.50
Manumalo	570	\$ 4,036,369.50
Marist St. Francis	130	\$ 920,575.50
Mary the Mother	15	\$106,220.00
Nazareth Fatuaiga	31	\$219,522.00
Pacific Horizons	145	\$ 1,026,795.75
St. Theresa`	161	\$1,140,097.35
Peteli	114	\$807,274.00
Samoa Baptist	181	\$1,281,724.35
South Pacific Academy	231	\$1,635,791.85
SPICC	203	\$1,437,515.00
Faasao Marist HS	303	\$2,145,649.05
Kananafou High School	135	\$955,982.25
	2818	<b>\$19,955,244.30</b>

# Private School Recommended Guidelines



# Private Schools Total Award and Guidelines

Cost per Student: \$7,081.35

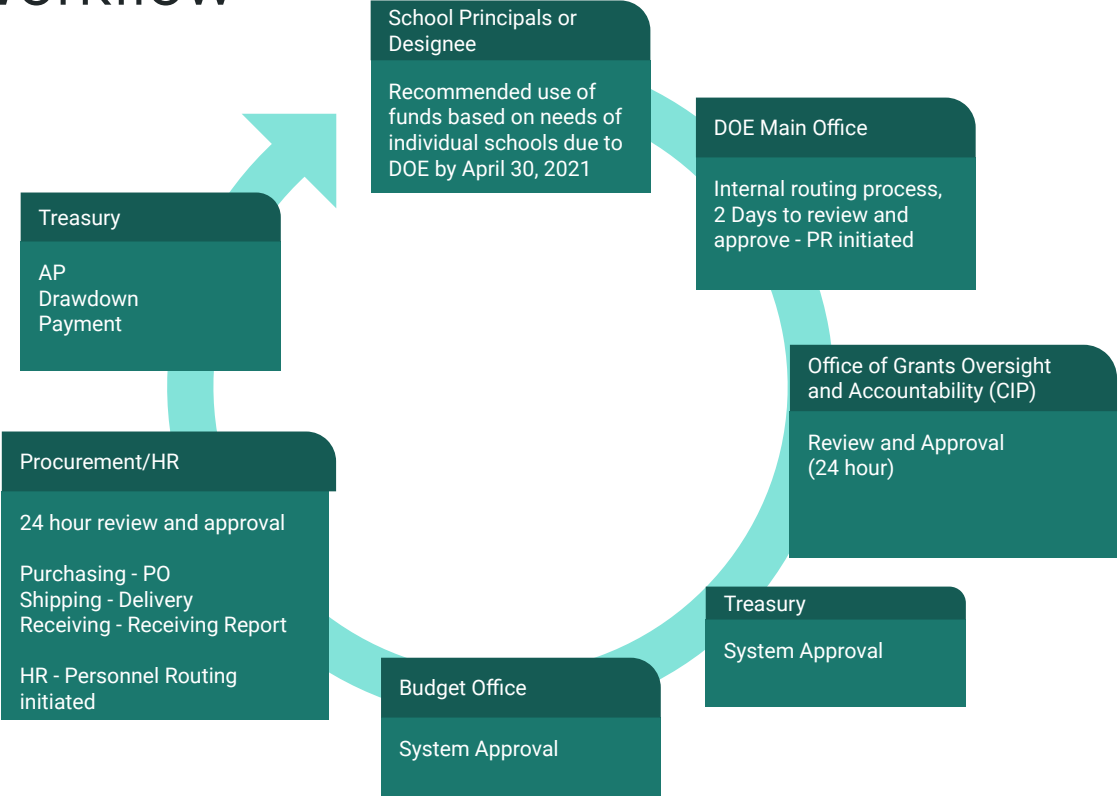
Total Student: 2,818

**Total Private School Allocations: \$19,955,244.30**

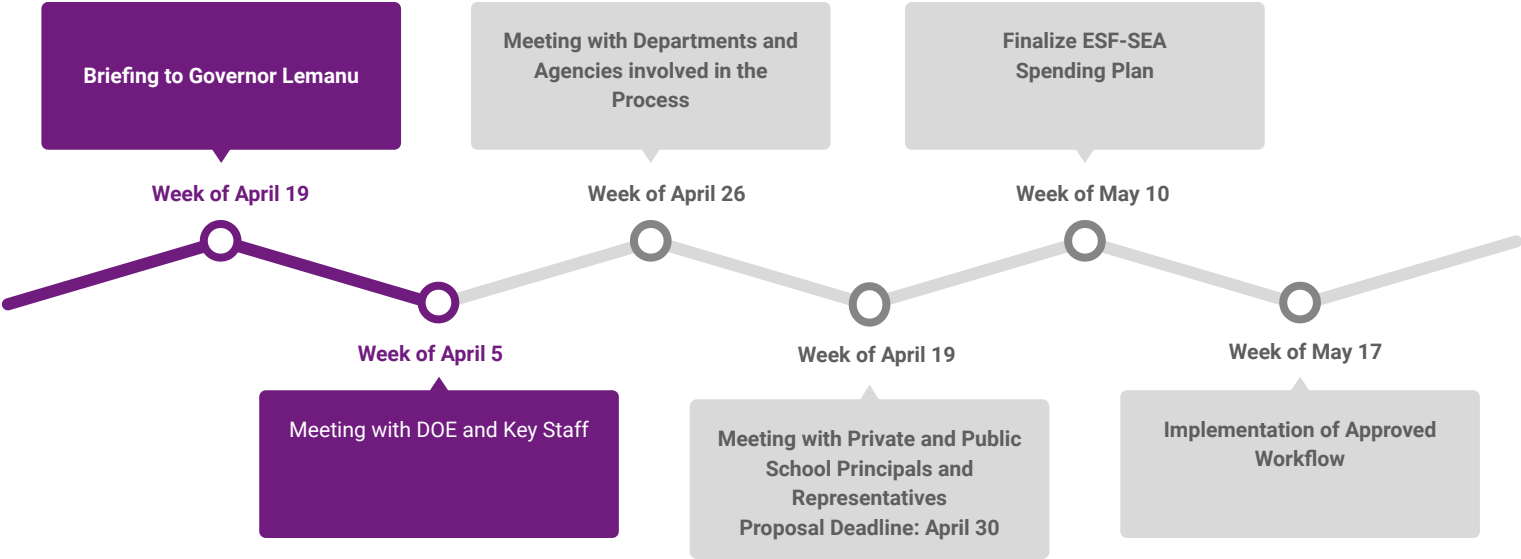
Student Learning Enhancement - 30%	\$ 5,986,573.29
Infrastructure Improvements - 60%*	\$ 11,973,146.60
Resiliency - 10%	\$ 1,995,524.43

*\*10% of Reserve Funds added to Infrastructure Improvements*

# Proposed Workflow



# Proposed Implementation Plan and Milestones



The End

---